

APR—MAY 2025

# PACCAR PARTS



## BRISBANE TRUCK SHOW EDITION



Brisbane Truck Show 2023

**PROJECTA**

### Automatic Battery Charger

1C25

**\$491**

- | 12V charger for wet, calcium, AGM, gel and lithium batteries
- | Safe and easy to use
- | 5 year warranty



1C25 **\$491**  
25 Amp battery charger, includes remote

1C25W **\$412**  
25 Amp workshop battery charger

1C35 **\$652**  
35 Amp battery charger, suits large batteries used in heavy-duty trucks. Includes remote

1C50 **\$869**  
50 Amp battery charger, includes remote

**GATER**

### Digital Wireless HD Reverse Camera Kit



**MEMBERS FROM \$245**

**NON-MEMBERS FROM \$295**



#### 5" DISPLAY DIGITAL WIRELESS 720P HD CAMERA KIT

- | 5" screen with 800 X 480 HD resolution
- | 110° wide angle lens camera with 1280 X 720 resolution
- | Supports up to 150M wireless range between monitor and camera
- | Connects with one wireless camera (included with kit)
- | 12V & 24V compatibility

GRV5HDW **\$245 \$295**

#### 7" DISPLAY DIGITAL WIRELESS 1080P HD CAMERA KIT

- | 7" screen, 4 channel with 1024 X 600 HD resolution
- | 110° wide angle lens camera with 1280 X 720 resolution
- | Supports up to 200M wireless range between monitor and camera
- | Connects up to 4 wireless cameras (1 included in kit)
- | 12V & 24V compatibility

GRV7HDW **\$429 \$479**

APR—MAY 2025

**PACCAR  
PARTS**

**AUSTRALIAN MADE. WORLD'S BEST.**



Brisbane Truck Show 2017

## **OPENING WORDS FROM OUR GENERAL MANAGER**

Welcome to our April-May catalogue, where we celebrate PACCAR's rich legacy in the trucking industry and our longstanding connection to the Brisbane Truck Show. Since our inception, PACCAR has played a pivotal role in shaping the landscape of heavy-duty trucks, and our presence at the Brisbane Truck Show has been a cornerstone of our commitment to innovation and excellence. With a proud history spanning decades, we have showcased industry-leading performance making this event a highlight for truck enthusiasts and professionals alike.

We look forward to showcasing our aftermarket support along with the latest models of Kenworth and DAF trucks at the 2025 Brisbane Truck Show!

PACCAR will be located at Stand 40 Hall 4, where we invite everyone to come and experience firsthand our latest offerings and advancements. This year promises to be particularly special one. Join us to explore our robust lineup and engage with our passionate team, who are eager to share insights and answer your questions. Don't miss this opportunity to connect with fellow trucking enthusiasts and see how PACCAR continues to lead the way in the industry.

We can't wait to see you in Brisbane — come and find us, and let's celebrate the future of trucking together!



Safe travels,

**Mark Santschi**  
General Manager  
PACCAR Parts

April 2025



**COMPREHENSIVE DEALER NETWORK AUSTRALIA-WIDE**

Visit [paccarparts.com.au](http://paccarparts.com.au)

For more details, Freecall\* 1800 PPARTS (772 787)

Prices herein are recommended selling prices for both Privileges members and non-members, inclusive of GST. Recommended selling prices in this publication are provided as a guide. Prices may vary at the dealerships. Freight charges may apply. Core charges are not included in selling price however may be applied by the dealer. All items have been included in good faith on the basis that goods will be available at the time of sale. Promotion available at participating Dealers from 1 April to 31 May 2025 or while stocks last.

\* Calls from Australian landlines are generally free of charge whilst calls from mobile phones are typically charged based on the rate determined by the caller's mobile service provider. Please check with your mobile service provider for call rates.

We make  
**going further**  
work.



**EATON**

*Powering Business Worldwide*

Follow us on social media to get the latest product and support information.



# EXPANDING HORIZONS



Handling everything from the smallest nuts and bolts right up to full-size truck cabs, PACCAR Parts' newly expanded Bayswater Parts Distribution Centre promises superior service for PACCAR customers across Australia.

PACCAR Parts' giant warehousing and Parts Distribution Centre (PDC) in the Melbourne suburb of Bayswater has benefited from a major investment and expansion designed to accommodate an even wider range of parts to support the company's dealers and customers throughout Australia.

The Bayswater site, which has been the home of Kenworth truck manufacturing in Australia since 1971, with more than 80,000 Kenworth trucks built there over the years, is the company's main Australian operation, sharing distribution duties with PACCAR's recently expanded distribution center (hub) in Brisbane.

The development is the latest step in PACCAR's goal of keeping Aussie trucks moving by further improving the time it takes for essential parts to reach dealers, said PACCAR Parts General Manager, Mark Santschi.

The multimillion-dollar project has been some four-and-a-half years in the making, from when the idea was first approved to the initial stages of construction in July 2023, and subsequent completion in December 2024.

"The original PDC was built in 1985 and then extended

on in 1996 when it more than doubled in size. With this update we've increased it by nearly 50 percent again to 15,700m<sup>2</sup>," said Bayswater PDC Manager, Kylie Kurczewski.

"To be able to continue to support our customers into the future, we needed space to hold more inventory to be able to get parts to our dealers faster. We had inventory stored at offsite facilities which is obviously not as efficient and easy to handle. So, we were already bursting at the seams with the volumes that we were holding."

The expansion project drew on ideas and innovation from PACCAR's other PDCs around the world, said Mr. Santschi.

These include a mezzanine level in the new facility, a spiral conveyor system, and motorised carts for ferrying parts.

"With the addition of the mezzanine, all parts that are up to 2kg are now stored there. There's about 13,000 parts and when you consider that we've got about 27,000 parts in the warehouse, that's a huge chunk of our parts volume now up in the mezzanine," said Ms. Kurczewski.

“The other cool piece of technology in the new PDC is a spiral conveyor system. We use a lift to get all our inventory up into the mezzanine, but once we’ve picked it into individual boxes for the dealers, we load those boxes onto the conveyor which travels in a spiral direction from top-to-bottom, then loads into a conveyor where we can collect the parts and consolidate them.”

Another development designed to improve workplace health and safety is the introduction of electrically-powered motorised carts to ferry picked stock, and height-adjustable receiving benches that are safer and more ergonomic for team members of different statures.

“We pick stock into carts from the mezzanine and those carts are now motorised – they basically run on drill batteries and drive electrically – so the team no longer need to physically push the carts and product, which reduces the risk of shoulder injuries.

In addition, all our new work benches for staff on the floor will be height adjustable, which is a luxury that usually only office staff have. This will really make it safer and more comfortable for everyone.”



The new PDC is also more environmentally friendly, thanks to the fitment of rooftop solar panels and additional water storage tanks, said Mr. Santschi.

“The entire new section of the building has a 257-kilowatt rooftop solar system that enables us to capture energy from sunlight. There are now 16 water storage tanks, which is an increase from the previous 12. The water that’s captured services grey water for toilets, gardening and things like that, with excess water pumped across to be used in the truck plant in the paint facility.

We’re not yet fully linked up to our building management system which manages everything including lights, aircon, and so on. But once the solar panels are hooked in to that system it should cut our energy consumption by about a third,” he said.

The opening of the Bayswater PDC means PACCAR is now better able to balance the workload between its Brisbane and Melbourne operations, following the doubling in size last year of PACCAR’s Brisbane PDC. “It’s all about how quickly we can get our parts to our

dealers. It doesn’t really matter which PDC it comes out of, it’s just who gets there the fastest,” said Ms. Kurczewski.

“While we’ve expanded here in Melbourne, we’re processing less lines because we’re sharing the load between the two PDCs to make us more effective at supporting our dealers. That also allows for future growth and ensures we’re not maxing out in one location.

In terms of the benefit these changes are going to give us in the warehouse, there is not a single process that we do today, whether that be receiving, picking or shipping, that isn’t going to have a process improvement and an efficiency improvement.”

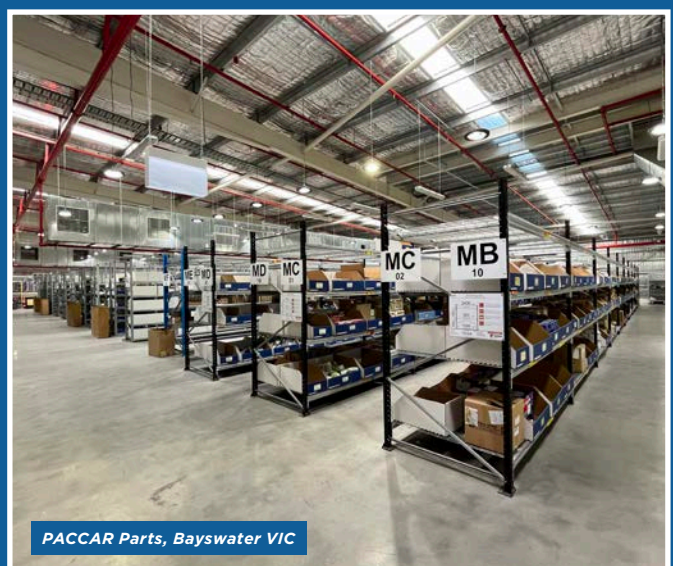
“We’ve redefined and are relaying all our pick paths to make them more efficient. We’ve also been able to adjust our aisle widths to make it safer, which also makes it more efficient. So, every process that we do to try and get our parts as efficiently to the dealers as possible will have an improvement.”

By expanding the Bayswater PDC so soon after the Qld-expansion PACCAR aims to increase customer uptime by adding a greater breadth of product and increasing its ability to service customers within 24 hours, said Mr Santschi.

“PACCAR remains committed to providing outstanding product availability and customer service across Australia. With more than 250,000 available truck parts and accessories, we try to ensure our PDCs stock every imaginable part our customers may need.”

Mr Santschi said this was achieved by several ways including utilising the company’s highly efficient inventory management, innovative warehousing technologies such as that on display at the new Bayswater PDC, managed dealer inventory, and PACCAR’s extensive dealer network.

PACCAR Parts dealer network stretches right across Australia covering all major routes and metro areas, with dealers stocking a wide range of genuine and branded replacement truck parts to fit all models of Kenworth and DAF trucks as well as mainstream US and European drivelines.



**PACCAR Privileges Members**

**KEEP AN EYE OUT FOR THE DARK BLUE P SYMBOL IN THE CATALOGUE FOR MEMBER PRICING!**

Sign up at [paccarparts.com.au/privileges](http://paccarparts.com.au/privileges)

**PACCAR GENUINE PARTS**

## Hub Assembly

**P MEMBERS FROM \$765**

**NON-MEMBERS FROM \$815**



**P MEMBERS SAVE \$50**

CM10037793

I 10 X 285 PCD, ABS ready

CM10037793 **P \$765 \$815** CM10038056 **P \$785 \$835**  
Front FF Front FL

**DANA**

## Brake Drum Shoe & Lining Kit

**P MEMBERS FROM \$164**

**NON-MEMBERS FROM \$199**



**P MEMBERS SAVE \$35**

2SS098123

2SS098123 **P \$164 \$199**  
Suits Dana E-Series axles (all variants)

2SS098125 **P \$164 \$199**  
Suits Dana D2000F steer axle (all variants)

2SS098127 **P \$164 \$199**  
Suits Dana drive axles (Air Glide & Primaxx suspensions)

**PACCAR GENUINE PARTS**

## Caliper

**P MEMBERS \$1,799**

**NON-MEMBERS \$2,049**



**P MEMBERS SAVE \$250**

PDX19539

I Suits Meritor DX195 series

PDX19539  
PACCAR Genuine steer caliper

PDX19540  
PACCAR Genuine steer & drive caliper

**SEE IN STORE FOR COMPLETE RANGE**

**PACCAR GENUINE PARTS**

## Brake Drum

**P MEMBERS \$347** **NON-MEMBERS \$397**

**P MEMBERS SAVE \$50**



I Front steer brake drum  
I Suits MFS steer axle 285 PCD

10037815  
16.5 X 5" drum

**Bendix**

## D2 Governor Valve

**P MEMBERS \$115** **NON-MEMBERS \$135**

**P MEMBERS SAVE \$20**



I Hi-temperature O-rings  
I Weatherproof cap  
I Ports 1/8" NPT

275707

**SEE IN STORE FOR COMPLETE RANGE**

**SKF**

## Air Dryer Kit

**P MEMBERS \$870** **NON-MEMBERS \$920**

**P MEMBERS SAVE \$50**



620300  
Turbo 2000 kit

**SEE IN STORE FOR COMPLETE RANGE**

**SKF**

## Air Dryer Cartridge

**P MEMBERS \$215** **NON-MEMBERS \$240**

**P MEMBERS SAVE \$25**



T224P  
Includes filter kit

**SEE IN STORE FOR COMPLETE RANGE**



# BRISBANE TRUCK SHOW

## COME AND SEE US!

BRISBANE CONVENTION & EXHIBITION CENTRE

## 15-18 MAY 2025

STAND 40, HALL 4



### Shock Absorbers

**P MEMBERS FROM \$275**

**NON-MEMBERS FROM \$325**



K374-41K1T **P \$275 \$325**  
Genuine Kenworth & DAF rear Airglide 200/400  
9" ride height

K374-38K1T **P \$279 \$329**  
Genuine Kenworth & DAF rear Airglide 200/460  
10.5" ride height

**SEE IN STORE FOR COMPLETE RANGE**



### Shock Absorbers

**P MEMBERS \$425**

**NON-MEMBERS \$475**



Adjustable shock absorber

HV2004R  
Suits Neway RH

HV2004L  
Suits Neway LH

HV2011  
Suits Kenworth steer

HV2020  
Suits Kenworth & DAF Airglide 200/400  
9" ride height

HV2021  
Suits Kenworth & DAF rear Airglide 400/460  
10.5" ride height

**SEE IN STORE FOR COMPLETE RANGE**



### King Pin Kits

**P MEMBERS FROM \$499**

**NON-MEMBERS FROM \$549**



140KK100 **P \$499 \$549**  
I-132SG, I-140SG, I-140S, I-140W steer axle  
Suits Kenworth, Mack & Iveco

328349 **P \$625 \$675**  
E series 1002-1462 steer axle - Garlock bushing  
Suits all Kenworth with 1002-1462 steer axle

328344 **P \$715 \$765**  
E series 1200-1320 steer axle - Bronze bushing  
Suits Kenworth

KPK1158 **P \$809 \$859**  
Bronze bush to suit i132& i140 Spicer steer axle



### Heater Tap

**\$220**



- Designed to regulate the flow of coolant to the heater core
- Effectively controls the heating inside your vehicle, allowing you to adjust the temperature as needed
- Compatible with Kenworth vehicles
- 2-port design with an outside diameter of 16mm

DHV90065  
Suits Kenworth K104, K200, T909, C509



### Shock Absorber Accessories

RRK001

**P MEMBERS \$230**

**NON-MEMBERS \$250**



RRK001 **P \$230 \$250**  
Steer air kit to suit shock absorber HV2011

RRK002 **P \$185 \$205**  
Drive air kit to suit shock absorber HV2020 & HV2021 - KT610PBD-DS KT610PBD

RRS001 **\$9.45**  
Standard eye bush KT610PBD-DS KT610PBD

**SEE IN STORE FOR COMPLETE RANGE**



### Scotseal Plus XL

**\$34.95**



- Updated seal using HNBRX material provides outstanding performance and extreme heat resistance
- Unitized design with 4 sealing lips

46300XT

**Freecall\* 1800 PPARTS (772 787)**

**To speak to your local dealer!**

**PACCAR**  
GENUINE PARTS

**T359 Twin Steer  
Drag Link**

**P MEMBERS**

**\$2,099** **NON-MEMBERS**  
**\$2,249**



J20-1017  
Kitted on Kenworth model T359 twin steer after July 2015

**PACCAR**  
GENUINE PARTS

**Height Control Valve**

**P MEMBERS**

**\$295** **NON-MEMBERS**  
**\$345**



H00500CP  
Used on Airglide suspensions

**WABCO**

**Height Control Valve**

**P MEMBERS**

**\$115** **NON-MEMBERS**  
**\$135**



464.008.011.0  
Max operating pressure 10.0 bar,  
length R200mm

**SEE IN STORE FOR COMPLETE RANGE**



**Height Control Valve**

**P MEMBERS**

**\$174** **NON-MEMBERS**  
**\$199**



T03-1701  
Suits BPW, York Wabco

**KENWORTH**  
GENUINE PARTS

**Pin-Equalizer Beam**

**P MEMBERS**

**\$360** **NON-MEMBERS**  
**\$385**



K179-517  
Pin-equalizer beam 8 X 4

**PACCAR**  
GENUINE PARTS

**Threaded Spring  
Shackle Bush**

**P MEMBERS**

**\$62.95** **NON-MEMBERS**  
**\$77.95**



5295  
Fitted on Kenworth K100G, K104, K108, K200

**PACCAR**  
GENUINE PARTS

**Spring Shackle Pin**

**P MEMBERS**

**\$140** **NON-MEMBERS**  
**\$165**



K179-536  
Front spring pin

**PACCAR**  
GENUINE PARTS

**Rear Spring Pin**

**P MEMBERS**

**\$114** **NON-MEMBERS**  
**\$139**



K179-537  
Fitted on most Kenworth models

**PACCAR**  
GENUINE PARTS

**Pitman Arm**

**P MEMBERS**

**\$1,195**



**NON-MEMBERS**  
**\$1,295**

K029-303  
Fitted on Kenworth T401 & T350



**PACCAR**  
GENUINE PARTS

## Front Spring Assembly

**P MEMBERS FROM**

**\$2,630**



**NON-MEMBERS FROM**

**\$2,880**



HK1073-200

- I Taper leaf front axle spring
- I Kenworth first fit

HK1073-200 **P \$2,630 \$2,880** 14.6K

HK48110-2020 **P \$2,735 \$2,985** 7.2T

HK1311-100 **P \$3,430 \$3,680**

HK48110-3370 **P \$3,455 \$3,705** 59"

**TIMKEN**

## Small Trailer Wheel Bearings

**FROM**  
**\$29.75**



Freshen up that small boat or general purpose trailer before your holiday. Did you know most small trailers have either common Ford or Holden bearings? PACCAR Parts has both standard and marine trailer kits.

I Suits Holden

I Suits Ford

K1T6007T1M **\$29.75**  
Includes marine seal

K1T6016T1M **\$32**  
Includes marine seal

K1T6011T1M **\$29.75**  
Includes standard seal

K1T6015T1M **\$32**  
Includes standard seal

**W**  
WattoTransportSpares

## Auto Slack Adjuster

WT5014AS

**\$92.95**



WT5014AS

I 28 spline

WT5014AS **\$92.95**  
5.5-6.5

WT5013AS **\$89.95**  
5-6

**ALCOA**  
WHEELS

## Alloy Wheels

**P MEMBERS FROM**

**\$445**

**NON-MEMBERS FROM**

**\$495**



ULA187

ULA187 **P \$445 \$495**

22.5 X 8.25 hub pilot 285.75, LvL ONE®

ULA182DB **P \$665 \$715**

22.5 X 8.25, Dura-Bright® finish

89U641 **P \$745 \$795**

22.5 X 9 PCD not offset, polished outer

824621DB **P \$1,015 \$1,065**

22.5 X 12.25 10-285, Dura-Bright® finish

**SEE IN STORE FOR COMPLETE RANGE**

**PACCAR**  
GENUINE PARTS

## Aluminium Wheel

**P MEMBERS**

**\$815**

**NON-MEMBERS**

**\$865**



89U631DB

Offset 22.5 X 9, 10-285,

Dura-Bright® finish, polished outside

**SEE IN STORE FOR COMPLETE RANGE**

**W**  
WattoTransportSpares

## Manual Slack Adjuster

**FROM**

**\$31.95**



WT5024HD

WT5024HD **\$31.95**

R/well 28SP/5.5-6.5 19mm adj nut

WT5025HD **\$31.95**

R/well 28SP/5-6-7 19mm adj nut

WT5022 **\$34.95**

BPW/HR1266-19FC

**P** **PACCAR**  
**Privileges**  
**Members**

**KEEP AN EYE OUT FOR THE DARK BLUE P SYMBOL IN THE CATALOGUE FOR MEMBER PRICING!**

Sign up at [paccarparts.com.au/privileges](http://paccarparts.com.au/privileges)

**JOIST**

## Turntable Top

**P MEMBERS**

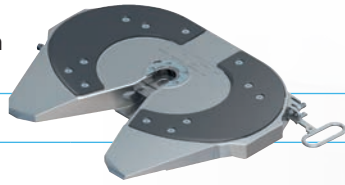
**\$3,409**

**P MEMBERS**  
**SAVE**  
**\$250**

**NON-MEMBERS**  
**\$3,659**

- Cast top
- External jaw lubrication
- Wear ring

JSK37C-D6GF



**R**  
ROCKINGER

## Trailer Coupling

**P MEMBERS**

**\$1,385**

**NON-MEMBERS**  
**\$1,585**

- D-Value: 285kN

R0500B66500  
50mm - flange mount 160 X 100



**P MEMBERS**  
**SAVE**  
**\$200**

**SAF** *Holland*

## Plate Assembly

**P MEMBERS**

**\$2,469**

**NON-MEMBERS**  
**\$2,569**

- Low lube top plate assembly

XA331EA



**P MEMBERS**  
**SAVE**  
**\$100**

**JOIST**

## Fifth Wheel Repair Kits

**P MEMBERS FROM**

**\$205**

**NON-MEMBERS FROM**

**\$280**



SK3105/94

SK3105/94 **P \$205 \$280**

Greaseless wear ring kit,  
4X bolts, 1X wear ring, 1X wear ring retainer.  
Suits 37CZ

SK2121/69Z **P \$239 \$339**

2X upper cushion, 2X lower cushion, 8X hex bolts.  
Suits JSK 42

**SAF** *Holland*

## Hub Assembly

**P MEMBERS**

**\$829**

**NON-MEMBERS**

**\$879**

3307304900  
SAF trailer hub 10 X 285  
Integral INTRADISC axle



**P MEMBERS**  
**SAVE**  
**\$50**

**SAF** *Holland*

## King Pin Kit

**P MEMBERS**

**\$119**

**NON-MEMBERS**

**\$139**

- 50mm Kingpin 210kN and bolt kit
- Zinc Plating with Trivalent Chromate, finish for prolonged corrosion protection

662101609K



**P MEMBERS**  
**SAVE**  
**\$20**

**SAF** *Holland*

## Air Springs

**P MEMBERS FROM**

**\$344**

**NON-MEMBERS FROM**

**\$379**

90557212 **P \$344 \$379**  
Neway AD246-10 2 bolt

90557270 **P \$894 \$969**  
Neway AD130-10/12



90557212



# BRISBANE TRUCK SHOW

## COME AND SEE US!

## 15-18 MAY 2025

BRISBANE CONVENTION & EXHIBITION CENTRE

STAND 40, HALL 4

**KENWORTH**  
GENUINE PARTS

### Leather Riggers Gloves

# \$9.95 ea

- | Beige premium cowgrain leather
- | Wing thumb for stitch free palm
- | Double Stitched for strength
- | Elastic Back



|             |    |             |     |
|-------------|----|-------------|-----|
| Z86-KW-1000 | M  | Z86-KW-1001 | L   |
| Z86-KW-1002 | XL | Z86-KW-1003 | 2XL |

**KENWORTH**  
GENUINE PARTS

### Nitrile Coated Gloves

# \$5.95 ea

- | Polyurethane/Nitrile micro foam coated on the palm
- | Seamless Nylon/Lycra liner
- | Ultra thin coating for superior flexibility and dexterity
- | Touch screen compatible for use on most screens, tablets and mobile phones
- | Breathable coating reduces heat, keeping hands cool and dry



|             |    |             |     |
|-------------|----|-------------|-----|
| Z86-KW-1004 | M  | Z86-KW-1005 | L   |
| Z86-KW-1006 | XL | Z86-KW-1007 | 2XL |

**KENWORTH**  
GENUINE PARTS

### Thermally Lined Gloves

# \$32.95 ea

- | 2™ Ski-Dri waterproof breathable lining
- | U100 Heatlok thermal lining
- | Abrasion resistant PVC grip



|             |    |             |     |
|-------------|----|-------------|-----|
| Z86-KW-1008 | M  | Z86-KW-1009 | L   |
| Z86-KW-1010 | XL | Z86-KW-1011 | 2XL |

**Keep your hands dry and warm!**

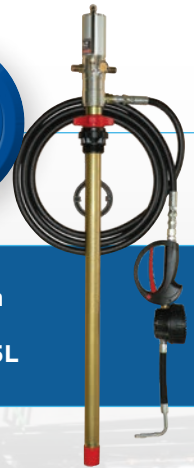
**A-FLO**  
EQUIPMENT

### Oil Distribution Kit

**P MEMBERS**  
**\$1,395**

**NON-MEMBERS**  
**\$1,495**

**P MEMBERS**  
**SAVE \$100**



Ideal for small to medium size workshops looking to upgrade from hand pumps but also covers larger workshops that have additional 205L oil drums that need catering for.

- | Suits 205L drum
- | 10 year warranty

OA205K3  
3:1 kit includes 3:1 drum pump, 4M hose, metered oil gun and air regulator

**A-FLO**  
EQUIPMENT

### 20L Oil Pump

**P MEMBERS**  
**\$54.95**

**NON-MEMBERS**  
**\$59.95**

**P MEMBERS**  
**SAVE \$5**



- | Provides 1 litre of oil in approximately 14 strokes
- | Includes hose

AP-1336B

**A-FLO**  
EQUIPMENT

### Spill Kit

# \$195



**General purpose spill kit C/W dustpan & brush.**

- | 40L

SC-40LGSKDB  
Kit includes: 1 X mini boom, 20 pads, 5kg of floor sweep, gloves, disposal bag

**PACCAR Privileges Members**

**KEEP AN EYE OUT FOR THE DARK BLUE P SYMBOL IN THE CATALOGUE FOR MEMBER PRICING!**

Sign up at [paccarparts.com.au/privileges](http://paccarparts.com.au/privileges)

↔ DOMETIC

## Drawer Fridge

**P MEMBERS \$945**

**NON-MEMBERS \$995**



- Compact design
- The compressor can be fitted to the side of the refrigerator (left or right) and up to 1.5m away

CD-30  
30L

↔ DOMETIC

## Portable Fridge/Freezer

**P MEMBERS \$729**

**NON-MEMBERS \$779**



- Compact design
- Full compressor cooling & freezing capability
- Upright space for 2L bottles
- Sturdy carry handle
- Durable construction
- Powered from 12/24V DC

CFF18  
18L

**GME**

## Magnetic Microphone Mount

**\$34.95**



- Suits most GME UHF CB radios
- Includes a 3m™ VHB™ adhesive patch

MB207

**GME**

## UHF CB Radio

**P MEMBERS \$494**

**NON-MEMBERS \$544**



The TX4500S is a din-sized UHF CB radio, ideal for installations in vehicles with a standard DIN mounting slot. Supplied with a DIN mounting kit, the TX4500S' compact-depth design allows for seamless installation in confined spaces.

- 5W 80 channel, DIN size
- ScanSuite™ digital scanning technology

TX4500S

**GME**

## 5W Handheld Radio with Accessories

**P MEMBERS \$328**

**NON-MEMBERS \$378**



- 5/ 1 Watt Switchable Transmission Power
- Water and dustproof (IP67 Ingress Protection)
- Up to 30 hours battery life

TX6165

5 Watt, high-contrast LCD display, 2 Watt speaker

**GME**

## Antenna - Elevated Feed

**P MEMBERS \$169**

**NON-MEMBERS \$199**



- Elevated-feed antennas provide high performance in virtually any mounting position
- Popular choice for the heavy vehicle industry and agricultural vehicles
- Made in Australia

AE4018K1

970mm, fibreglass whip, barrel style stainless steel spring, 6.6Dbi gain



# BRISBANE TRUCK SHOW

## COME AND SEE US!

BRISBANE CONVENTION & EXHIBITION CENTRE

## 15-18 MAY 2025

STAND 40, HALL 4

**KENWORTH**  
GENUINE PARTS

### Wide Stainless Steel Fuel Tank Strap

K84-1087P

**MEMBERS**  
**\$235** ea

**NON-MEMBERS**  
**\$255** ea



K84-1087P

- ▮ Made from polished stainless steel and featuring a width of 75mm
- ▮ Matching low profile rubber strap liners provide a clean finish to the installation
- ▮ High-quality OEM tank straps are available to suit all Kenworth models and are direct replacements for standard tank straps

**TALK TO YOUR LOCAL DEALER FOR THE PARTS REQUIRED TO UPGRADE YOUR PARTICULAR TRUCK.**

| TANK SHAPE  | STRAP CONFIGURATION                       | STRAPS TO SUIT CONVENTIONAL MODELS | STRAPS TO SUIT CAB OVER MODELS | PRICE                       |
|-------------|---|------------------------------------|--------------------------------|-----------------------------|
| Round       | No steps                                  | K84-1081P                          | K84-1084P                      | <b>P \$175</b> <b>\$195</b> |
|             | With steps                                | K84-1080P                          |                                | <b>P \$205</b> <b>\$225</b> |
|             |   |                                    | K84-1085P                      | <b>P \$215</b> <b>\$235</b> |
|             | Legend Series steps                       | K84-1090P                          | -                              | <b>P \$205</b> <b>\$225</b> |
| Rectangular | No steps                                  | K84-1083P                          |                                | <b>P \$215</b> <b>\$235</b> |
|             |   |                                    | K84-1086P                      | <b>P \$205</b> <b>\$225</b> |
|             | With steps / top plate                    | K84-1082P                          |                                | <b>P \$245</b> <b>\$265</b> |
|             |   |                                    | K84-1087P                      | <b>P \$235</b> <b>\$255</b> |
|             | With steps - MTD over T610 cab suspension | K84-1091P                          | -                              | <b>P \$265</b> <b>\$285</b> |

**KENWORTH**  
GENUINE PARTS

### Wide Stainless Steel Fuel Tank Strap Lining

**MEMBERS FROM**  
**\$34**

**NON-MEMBERS FROM**  
**\$39**



| TANK SHAPE  | CONVENTIONAL MODELS | CAB OVER MODELS | PRICE                     |
|-------------|---------------------|-----------------|---------------------------|
| Round       | K89-1009-1040       | K89-1009-1000   | <b>P \$34</b> <b>\$39</b> |
| Rectangular | K89-1009-1160       | K89-1009-1260   | <b>P \$34</b> <b>\$39</b> |
|             | K89-1009-1100       |                 |                           |

- ▮ Suits 75mm wide polished stainless steel straps
- ▮ Direct replacement for original straps
- ▮ Genuine OEM parts

**Freecall\* 1800 PPARTS (772 787)**  
**To speak to your local dealer!**

**KENWORTH**  
 GENUINE PARTS

**MEMBERS  
 SAVE  
 \$100**

**K220  
 Grille Bar Kit**

**MEMBERS  
 \$895**

**NON-MEMBERS  
 \$995**



- Includes 8 grille bars
- Retainers and mounting hardware included
- Genuine OEM parts

R60-1044-K1T

THIS ACCESSORY AND MORE CAN BE FOUND IN THE K220 ACCESSORIES GUIDE



**KENWORTH**  
 GENUINE PARTS

**K220 Stainless Steel  
 Sunvisor**

**MEMBERS  
 \$1,550**

**NON-MEMBERS  
 \$1,650**



- Two piece construction
- Clean boltless look
- Uses existing mounting points

R74-1060-100

**MEMBERS  
 SAVE  
 \$100**

**KENWORTH**  
 GENUINE PARTS

**Toolbox Storage  
 Compartment**

**\$250**



T29-1042-100R

- Adds an extra storage compartment to your toolbox door
- Textured powdercoat finish
- Suits standard size toolbox door on 36", 50" & 1400mm sleepers, as well as COE models

T29-1042-100  
 Passenger's side door

T29-1042-100R  
 Driver's side door

**KENWORTH**  
 GENUINE PARTS

**Number Plate Surround**

**MEMBERS FROM  
 \$64.95**

**NON-MEMBERS FROM  
 \$74.95**



- Stainless steel

N60-KW-1001 **\$64.95 \$74.95**  
 Suits slimline plates

N60-KW-1000 **\$89.95 \$99.95**  
 Suits standard size plates

**MEMBERS  
 SAVE  
 \$10**

**aero**

**Chrome 7" to 5" Stacks**

**MEMBERS FROM  
 \$585**

**NON-MEMBERS FROM  
 \$625**

- 1525 mm long
- Chrome plating to Australian standard AS1192-1973

2893P75/JW **\$585 \$625** Straight

2993P75/JW **\$625 \$675** Mitre cut

2793P75/JW **\$699 \$749** Curved



2893P75/JW 2793P75/JW



# TRAILER CATALOGUE VOLUMES 1, 2 & 3

Visit [www.paccarparts.com.au/trailer](http://www.paccarparts.com.au/trailer)

or scan the QR code to download or order your copy now!



## Visor

MEMBERS

**\$1,695**

MEMBERS  
**SAVE \$100**

NON-MEMBERS  
**\$1,795**

- Stainless Steel
- Suits T909, T659 & C509
- Manufactured in Australia

VD909-13  
Deep V - 13"



VD909-13

You've invested in the world's best truck, so accept nothing less than Armoury stainless steel accessories for an iconic look that lasts the journey.



## Headlight Surround

MEMBERS

**\$519 pair**

MEMBERS  
**SAVE \$30**

NON-MEMBERS  
**\$539 pair**

- Stainless Steel
- Suits T909
- Manufactured in Australia

HLS909



HLS909



## Reman Transmission

MEMBERS FROM

**\$9,600**

NON-MEMBERS FROM

**\$9,950**

MEMBERS  
**SAVE \$350**



REM20918B-PAC

Trust PACCAR Genuine remanufactured gearboxes, built with all genuine components and stocked extensively through the PACCAR Dealer Network

REM20918B-PAC **MEMBERS \$9,600 NON-MEMBERS \$9,950**

REM22918B-PAC **MEMBERS \$11,345 NON-MEMBERS \$11,695**



## Universal Joint

FROM

**\$124**



5.280X

5.280X **\$124**  
1710

5.279X **\$187**  
1610

5.281X **\$127**  
1810

5.674X **\$173**  
1610 half round

5.675X **\$161**  
1710 half round

5.676X **\$128**  
1810 half round

Non greaseable universal joint

SPL250-SF3X **\$325**  
Suits SPL250 driveline

SPL170-SF4X **\$270**  
Suits SPL170 driveline

Greaseable universal joint

SPL250.3X **\$250**  
Suits SPL250 driveline

SPL170.4X **\$260**  
Suits SPL170 driveline



SPL250.3X



## Intercooler/ Charge Air Cooler

**\$4,850**

QFC86000  
Suits K220



Brisbane Truck Show 2021

**DAF**





XG



**KENWORTH**

GENUINE MERCHANDISE

MEMBERS SAVE \$5

\*PRIVILEGES MEMBER PRICING ONLY AVAILABLE IN-STORE

MEMBERS SAVE \$5

MEMBERS SAVE \$5

**A**  
**Truckers Cap**

MEMBERS \$24.95\*  
NON-MEMBERS \$29.95

I Corduroy

C-KEN1109

**B**  
**Mens Long Sleeve - White**

MEMBERS \$44.95\*  
NON-MEMBERS \$49.95

I Sizes S-3XL

C-KEN1058 to C-KEN1058-3XL

**C**  
**Womens Bamboo Polo**

MEMBERS \$49.95\*  
NON-MEMBERS \$54.95

I Sizes M-XL

C-KEN1025-M to C-KEN1025-XL

**D**  
**Adults Beanie**

\$13.95

I Brown marle colour

I 1971 Bug logo woven on tag

C-KEN899

**E**  
**Kenny Book**

\$15.95

I Kenny and Katie's Big Adventure soft cover book

I This Kenworth Kids' Book celebrates the spirit of exploration, curiosity, and the joy of discovery, offering a memorable reading experience that parents and children can enjoy together

C-KEN1075

**Bar Mat**

MEMBERS \$54.95\*  
NON-MEMBERS \$59.95

I 890mm X 250mm

BARM-KWBLK

MEMBERS SAVE \$5

**Premium Badge Packs**

MEMBERS \$79.95\*  
NON-MEMBERS \$99.95

MEMBERS SAVE \$20



Z53-KW-1002  
Gold



Z53-KW-1003  
Chrome



# Happy Mother's Day

MAY 11<sup>TH</sup> 2025

This year we dedicate May 11th to honouring the love, strength, and sacrifices of mothers, carers, those who lost their mum, mums to be and pet mums everywhere.

Whether it's the little things they do daily or the monumental life lessons they teach, mothers have a unique way of making our lives better.

On this special day, take a moment to express your gratitude and love—whether through a heartfelt message or a thoughtful gift!



**F**  
**Womens T shirt**

**\$39.95**

- Red
- Sizes 8-16

C-KEN1056 to C-KEN1056-16

**G**  
**Womens T shirt**

**\$39.95**

- Blue
- Sizes 10-14

C-KEN1057-10 to C-KEN1057-14

**H**  
**Truckers Cap**

**MEMBERS**  
**\$24.95\***

**\$29.95**

- Pink

C-KEN1066

**KENWORTH**  
GENUINE PARTS

## Rubber Floor Mats - Legacy Logo

**MEMBERS**  
**\$265 pair**

**NON-MEMBERS**  
**\$295 pair**

Driver & passenger



KTK200  
Suits Kenworth model K200

KTT610  
Suits Kenworth models T610/T610SAR, T410/T410SAR, T360

KTT3T4  
Suits Kenworth models T3 & T4

KTT6T9  
Suits Kenworth models T6 & T9

**KENWORTH**  
GENUINE PARTS

## Mattress Protector

**\$206**

SKMP8010B  
Black 100% cotton, 190gsm



Brisbane Truck Show 2005

**Freecall\* 1800 PPARTS (772 787)**  
**To speak to your local dealer!**

**KENWORTH**  
 GENUINE PARTS

**Rubber Mudflaps - Legacy Logo**

**MEMBERS FROM \$59.95** **NON-MEMBERS FROM \$69.95**

- I Durable
- I Perfect for heavy duty applications
- I Reduces cracking, bending and tearing
- I Crisp, striking Legacy logo
- I Made in Australia

**Black, white Kenworth banner**

|             |                  |                |         |
|-------------|------------------|----------------|---------|
| KCMFBWB6015 | <b>P \$59.95</b> | <b>\$69.95</b> | 60x15cm |
| KCMFBWB6030 | <b>P \$89.95</b> | <b>\$99.95</b> | 60x30cm |
| KCMFBWB6045 | <b>P \$99</b>    | <b>\$109</b>   | 60x45cm |
| KCMFBWB6060 | <b>P 118</b>     | <b>\$128</b>   | 60x60cm |



**Black, red Kenworth banner**

|             |                  |                |         |
|-------------|------------------|----------------|---------|
| KCMFRWB6015 | <b>P \$64.95</b> | <b>\$69.95</b> | 60x15cm |
| KCMFRWB6030 | <b>P \$89.95</b> | <b>\$99.95</b> | 60x30cm |
| KCMFRWB6045 | <b>P \$89.95</b> | <b>\$99.95</b> | 60x45cm |
| KCMFRWB6060 | <b>P 117</b>     | <b>\$127</b>   | 60x60cm |
| KCMFRWB6076 | <b>P 119</b>     | <b>\$129</b>   | 60x76cm |



**White, red Kenworth banner**

|             |                  |                |         |
|-------------|------------------|----------------|---------|
| KCMFRWW6015 | <b>P \$69.95</b> | <b>\$79.95</b> | 60x15cm |
| KCMFRWW6030 | <b>P \$119</b>   | <b>\$129</b>   | 60x30cm |
| KCMFRWW6045 | <b>P \$119</b>   | <b>\$129</b>   | 60x45cm |
| KCMFRWW6060 | <b>P 138</b>     | <b>\$148</b>   | 60x60cm |



**KENWORTH**  
 GENUINE PARTS

**Canvas Seat Cover**

**MEMBERS \$199** **NON-MEMBERS \$229**

- I Super tough canvas
- I Water proof

SK1SR16860BRCA  
 Suits ISRI 6860/870, driver - grey

SKHAR1TBLCA  
 Suits Kenworth Harita, rider - grey



**KENWORTH**  
 GENUINE PARTS

**Sheepskin Seat Cover**

**MEMBERS FROM \$265**

**NON-MEMBERS FROM \$295**

- I Quality 25mm pile sheepskin

**SUITS ISRI 6860/870 SEATS**

SK1SR168601BR SB **P \$265 \$295**  
 Driver - black

SK1SR168601BR SC **\$295**  
 Driver - charcoal

SK1SR168601BR SU **\$295**  
 Driver - burgundy

**SUITS HARITA SEATS**

SKHAR1T1BL SB **P \$265 \$295**  
 Rider - black

SKHAR1T1BL SC **\$295**  
 Rider - charcoal

SKHAR1T1BL SU **\$295**  
 Rider - burgundy





# TRAILER CATALOGUE VOLUMES 1, 2 & 3

Visit [www.paccarparts.com.au/trailer](http://www.paccarparts.com.au/trailer)

or scan the QR code to download or order your copy now!



## Air Freshener

FROM  
**\$5.95**

| X-tra Strength

10605 **\$5.95** Vanillaroma Big Tree

10612 **\$5.95** Strawberry Big Tree

10655 **\$5.95** Black Ice Big Tree

10689 **\$5.95** New Car Big Tree

X-tra Strength for an X-tra boost of fragrance! Like a normal Tree, only bigger. Great for large spaces, or wherever you need a heavy-duty fragrance blast.

10605



32005



| 3 pack

32005 **\$8.50** Vanillaroma

32055 **\$8.50** Black Ice

32089 **\$8.50** New Car

Freshen your life with the world-famous LITTLE TREES air fresheners. LITTLE TREES fragrances are high quality, strong, and long-lasting. At home or on the road, let LITTLE TREES freshen your life.



## Bull Bar

N46-DF-1000-111, N46-DF-1000-011

MEMBERS

**\$6,750**

NON-MEMBERS

**\$7,500**

- | Integrated design for the DAF Euro 6 XF & CF
- | Driver's air bag, seat belt pretensioner and AEBS compatible
- | Designed, engineered and manufactured in Australia
- | Fully ADR compliant

### CF BULL BAR

N46-DF-1000-012 **\$6,200 \$6,900**  
Version 1, hammertone

N46-DF-1000-011 **\$6,750 \$7,500**  
Version 1, polished

N46-DF-1000-112 **\$6,200 \$6,900**  
Version 2, hammertone

N46-DF-1000-111 **\$6,750 \$7,500**  
Version 2, polished

### XF BULL BAR

N46-DF-1002-012 **\$7,650 \$8,500**  
Version 1, hammertone

N46-DF-1002-011 **\$8,250 \$9,200**  
Version 1, polished

N46-DF-1002-112 **\$7,650 \$8,500**  
Version 2, hammertone

N46-DF-1002-111 **\$8,250 \$9,200**  
Version 2, polished





## Spheerol Ultratak Multipurpose Lithium Grease

CAS3414146

**\$390**

CAS3414146



- Special properties in wet conditions with dramatic decrease in water washout
- Corrosion resistant, even against salt water

CAS3414147 **\$12.80**  
450gm

CAS3414146 **\$390**  
20kg



## Premium Heavy Duty Grease

FROM **\$10.50**



- High performance multipurpose lithium complex grease
- Excellent performance and corrosion prevention

CAS3377124 **\$10.50**  
450gm

CAS3377123 **\$340**  
20kg



## PG Platinum Coolant

**P MEMBERS \$124**

**NON-MEMBERS \$134**



- For use in all heavy duty, light duty and gas engines
- Organic lifetime propylene glycol premixed coolant with 6 years, 1.5 million kms, 36,000 hours service life.

CC36084 20L



## Original Glass Water Repellent

**\$19.95**



- Improve all-weather visibility, safety and driving comfort
- Effective for repelling rain, sleet and snow

800002250 473ml



## PG Plus Coolant

**P MEMBERS \$118**

**NON-MEMBERS \$128**



- For use in all heavy duty, light duty and gas engines
- Life-of-the-engine Hybrid coolant, with 5 years, 1 million kms, 20,000 hours service life.

CC2869 20L



## Interior Glass Antifog

**\$19.95**



- Reduces interior fogging and removes smoke residue
- Improves driving visibility

630046 355ml



## 2-in-1 Glass Cleaner & Rain Repellent

**\$15.95**



- Easy application, spray on, wipe off
- Cleans automotive glass leaving a streak-free finish
- Repels rain by causing water to bead up and roll away

5071268 680ml



**Freecall\* 1800 PPARTS (772 787)**

**To speak to your local dealer!**



## Contact Cleaner

**P MEMBERS**  
**\$22.95**

**NON-MEMBERS**  
**\$27.95**



- | Inert high purity cleaning solvent
- | Non-corrosive, non-staining and evaporates immediately
- | Plastic-safe formula
- | Ideal for electrical switches, sensors and circuits

CRC-2016 350gm



## 5-56 Degreaser

**\$11.95**

- | Multi purpose lubricant
- | Breaks through rust and corrosion
- | Clears away scale and dirt

CRC-5005 400gm



## Primary Air Filters

**FROM**  
**\$62.50**



- | Protects engines from dust and dirt particles

AF351KM **\$62.50**  
Axial Seal Primary Air Filter,  
suits Kenworth K & T series

AF887KM **\$105**  
Axial Seal Primary Air Filter,  
suits Kenworth K & T series

AF1968M **P \$81.50 \$89**  
Suits Kenworth K & T Series  
and Volvo/Mack Trucks

AF1969M **P \$114 \$122**  
Premium axial seal,  
suits Kenworth K & T series  
and Volvo/Mack Trucks



## Lube Filter

**FROM**  
**\$68**

- | Standard seals
- | High-efficiency contaminant capture

P550949 **\$68**  
Suits Cummins pre 2010 engines

P559000 **\$80**  
Suits Cummins X15 and ISX engines



## Blue Lube Filter

**\$88**

- | Heavy-duty seals
- | Designed for extended maintenance programs
- | High-efficiency contaminant capture

DBL7900  
Suits Cummins X15 and ISX engines



## Power Steering Filter

**\$25.50**

- | For Kenworth power steering systems
- | Engineered and tested for Australian oils & conditions

R2788PRYC



## Filter Kit

**FROM**  
**\$85**

- | Transmission Filter Kit

R2800PRYC **\$85**  
Suits Allison transmission,  
4" Sumps .  
Includes gaskets & seals

RSK185RYC **\$130**  
Suits Cummins ISL engines;  
Contains: 1 X Z871RYC oil  
filter, 1 X Z948RYC fuel  
filter, 1 X Z833RYC fuel  
water separator



## Oil/Air Separator

**\$15.80**

Z1006RYC  
Effectively remove oil and moisture from  
air circulating within the Selective Catalytic  
Reduction System



**KENWORTH**  
GENUINE PARTS

## LED Load Light

**P MEMBERS**  
**\$545**

**P MEMBERS**  
**SAVE \$50**

**NON-MEMBERS**  
**\$595**



- Kit 2 X lights
- Mirror mounted
- Spot beam
- 9-36V
- 1630mm cable
- Mini deutsch connector
- Bracketry included
- 5 year warranty



KWLOADLIGHT

**NARVA**

## Ultima Connect + Controller

**P MEMBERS**  
**\$175**

**P MEMBERS**  
**SAVE \$20**

**NON-MEMBERS**  
**\$195**



- Beam shape and intensity adjustment to suit your driving conditions
- 3 pre-set, customisable driving modes
- Adjustable brightness 24 inch main & 8 inch AUX controls

74408

**Britax**

## BF620 Series LED Twin Beacon

**P MEMBERS**  
**\$584**

**P MEMBERS**  
**SAVE \$50**

**NON-MEMBERS**  
**\$634**



- Twin SAE J845 class 1 beacon, IP67, RCM

BF620-00BR1TAX

**Freecall\* 1800 PPARTS (772 787)**

**To speak to your local dealer!**

**NARVA**

## Ultima MK3 Driving Light

**P MEMBERS FROM**

**\$557**

**NON-MEMBERS FROM**

**\$657**

- Up to 30% brighter when compared to MK2 Driving Lights
- Improved IP rating - IP68 & IP69K
- Lifetime 'No Fault' warranty

71742 **P \$557 \$657**

Hybrid beam, satin finish, single driving light.

71745 **P \$575 \$675**

Spot beam, satin finish, single driving light. Impressive 1,401M beam distance

71744 **P \$1,195 \$1,395**

Hybrid beam, satin finish, pair, wiring harness included to suit a 4x4 only



71742

Yellow lens protector can be ordered free of charge, along with a selection of trims and bezels, after purchase. See packaging for details.

**NARVA**

## Ultima MK3 Driving Light Kit

**P MEMBERS**

**\$2,829**

**NON-MEMBERS**

**\$3,029**



The Ultima MK3 transport kit has been specifically designed for the Australian market and comes with everything a trucks needs to achieve the best length, spread and control

**P MEMBERS**  
**SAVE \$200**

71748

Includes - 2 X hybrid, 2 X spot with 4 X clear and 4 X selective yellow lens protectors, Connect+ controller and smart transport harness

**J.W. SPEAKER**  
Professional Lighting Systems

## Head Light Insert 7"

**P MEMBERS**  
**SAVE \$100**

**P MEMBERS FROM**

**\$549**

**NON-MEMBERS FROM**

**\$649**

Dual Burn technology combines high and low beam when turning on your high beam, effectively increasing the light output on high beam by about 10%.

- EVO 2 PRO
- 'Dual Burn'
- High/low with chrome bezel
- 12/24V

0556951 **P \$549 \$649**  
Model 8700

0550011 **P \$599 \$699**  
Model 8710, high beam only



0556951



0550011



# LIFESAVING TECHNOLOGY: BRINGING OLDER KENWORTH TRUCKS UP TO NEW STANDARDS



Australia has recently introduced new regulations for trucks, marking a significant step toward improving road safety for heavy vehicles. In response, PACCAR Parts is launching a retrofit solution for Autonomous Emergency Braking that brings earlier model Kenworth trucks into line with the new standards.

New Australian Design Rules (ADRs) aimed at improving road safety for heavy goods vehicles came into effect in February 2025. Among these is ADR 97/00, which mandates the fitment of Advanced Emergency Braking (AEB) to most heavy goods vehicles over 3.5 tonnes Gross Vehicle Mass (GVM).

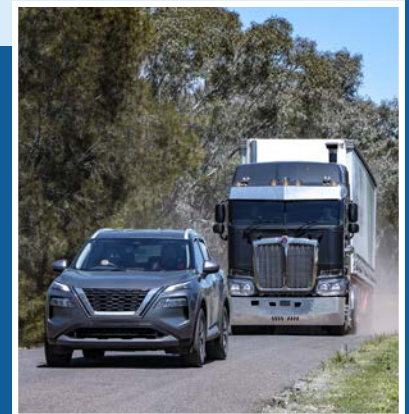
“Advanced Emergency Braking Systems (AEBS) are designed to detect likely forward collisions, alert drivers, and automatically apply the brakes if the driver does not respond. The crucial technology seeks to minimise the severity of in-lane frontal collisions, particularly in monotonous highway driving conditions” said Brett Medlin, the Technical and Account Manager for leading truck braking system specialist Knorr-Bremse.

“With the new mandates in effect from February 2025, most new locally built trucks including Kenworth will come with the new safety systems installed by default, so it’s important for drivers to be aware of the technology and how it operates” Brett Medlin said. “Bendix Fusion is an Advanced Driver Assistance System (ADAS), designed to enhance vehicle control and safety across diverse driving conditions. The technology is already fitted as standard on most new Kenworth models, ensuring compliance with ADR 97/00.”

PACCAR has been an early adopter of AEB technology, equipping locally-manufactured Kenworths with the Bendix Fusion technology since the model T610 which launched in 2016. This integrated system combines radar, camera technology, and the Bendix ESP (Electronic Stability Program) to provide comprehensive collision mitigation and enhanced braking capabilities to improve road safety.

“The collision mitigation system PACCAR uses on its locally-manufactured Kenworth trucks is the fully-featured version of Bendix Fusion that includes Enhanced Autonomous Emergency Braking, Enhanced Stationary Vehicle Braking, Multi-lane Autonomous Emergency Braking, and Highway Departure Warning

and Braking.” “Nose-to-tail collisions is the second-most common accident involving trucks after rollovers. In scenarios like a car cutting off a truck, or moving out from a lane of stationary traffic in front of the truck, the Bendix Fusion braking system applies the brakes in a much faster way than a driver can react.”



AEBS is not just relevant for new trucks, compatible older vehicles can be upgraded with the latest life-saving technologies to better support drivers in safety critical situations, Brett shared.

PACCAR Parts is now providing its customers the ability to upgrade certain older Kenworth trucks that are compatible with the latest Bendix Fusion system. “Most Kenworth trucks that have an electronic stability program on it could have the electronic brake controller upgraded with the Bendix Fusion system. So long as you’ve got the right level of electronics and valves on the truck, you can retrofit it.”

“AEBS not only improves the safety of these vehicles, but a lot of tenders including government, construction and grocery projects specify the level of technology that must be on the truck, including the fitment of AEBS.”

PACCAR customers who are considering retrofitting the Bendix Fusion system to their vehicles should speak to their PACCAR Parts dealer. The dealer will coordinate with PACCAR’s technical team and Knorr-Bremse’s technical support team to ensure the chassis number is compatible and guide the implementation of the retrofit safety system.

# PACCAR PARTS DEALERS



**FIND YOUR NEAREST DEALER ON**  
[paccarparts.com.au/find-a-dealer](https://paccarparts.com.au/find-a-dealer)

## VICTORIA

|                             |              |
|-----------------------------|--------------|
| TRP Ballarat                | 03 4333 9700 |
| TRP Geelong                 | 03 5274 2646 |
| TRP Pakenham                | 03 8796 9155 |
| TRP Somerton                | 03 9219 6601 |
| TRP Warrnambool             | 03 5560 5477 |
| TRP Peninsula               | 03 5911 7223 |
| Bayswater Truck Centre      | 03 8796 9999 |
| GTC Kenworth DAF Bairnsdale | 03 5152 1616 |
| GTM Kenworth DAF Shepparton | 03 5821 3977 |
| Hallam Truck Centre         | 03 8796 9100 |
| Kenworth DAF Melbourne      | 03 9396 9100 |
| MTC Kenworth DAF Mildura    | 03 5051 2800 |
| TCTC Kenworth DAF Wodonga   | 02 6049 8888 |
| Kenworth DAF Morwell        | 03 5134 4383 |
| TTS Kenworth DAF Swan Hill  | 03 5033 1372 |
| Kenworth DAF Horsham        | 03 4310 5899 |
| Kenworth DAF Mickleham      | 03 8723 7777 |

## QUEENSLAND

|   |              |
|---|--------------|
| TRP Bundaberg                           | 07 4153 1849 |
| TRP Emerald                             | 07 4897 2000 |
| TRP Roma                                | 07 4578 8000 |
| TRP Warwick                             | 07 4598 3100 |
| TRP Cairns                              | 07 4044 4400 |
| TRP Tolga                               | 07 4095 4132 |
| Brown & Hurley Kenworth DAF Caboolture  | 07 3385 4800 |
| Brown & Hurley Kenworth DAF Darra       | 07 3363 8000 |
| Brown & Hurley Kenworth DAF Mackay      | 07 4952 3722 |
| Brown & Hurley Kenworth DAF Rockhampton | 07 4923 8000 |
| Brown & Hurley Kenworth DAF Toowoomba   | 07 4690 7300 |
| Brown & Hurley Kenworth DAF Townsville  | 07 4758 4000 |
| Brown & Hurley Kenworth DAF Yatala      | 07 3441 7000 |

## WESTERN AUSTRALIA

|                               |              |
|-------------------------------|--------------|
| TRP Bibra Lake                | 08 9359 7480 |
| CJD Kenworth DAF Albany       | 08 6820 2400 |
| CJD Kenworth DAF Bunbury      | 08 9722 8100 |
| CJD Kenworth DAF Geraldton    | 08 9960 8000 |
| CJD Kenworth DAF Kalgoorlie   | 08 9080 0500 |
| CJD Kenworth DAF Perth        | 08 9359 7400 |
| CJD Kenworth DAF Port Hedland | 08 9140 0200 |

## NEW SOUTH WALES

|   |              |
|---|--------------|
| TRP Gosford                               | 02 4964 0697 |
| Kenworth DAF Taree                        | 02 6552 6733 |
| Brown & Hurley Kenworth DAF Coffs Harbour | 02 6648 2222 |
| Brown & Hurley Kenworth DAF Kyogle        | 02 6632 0333 |
| Brown & Hurley Kenworth DAF Tamworth      | 02 5778 2777 |
| CTR Kenworth DAF Canberra                 | 02 6297 3862 |
| Gilbert & Roach Kenworth DAF Huntingwood  | 02 8825 3000 |
| Gilbert & Roach Kenworth DAF Narellan     | 02 4647 7377 |
| Gilbert & Roach Kenworth DAF Newcastle    | 02 4964 8641 |
| Illawarra Truck Repairs & Spares          | 02 4274 9070 |
| Inland Kenworth DAF Dubbo                 | 02 6881 7900 |
| Inland Kenworth DAF Griffith              | 02 6963 2900 |
| Inland Kenworth DAF Orange                | 02 6394 9200 |
| Inland Kenworth DAF Wagga Wagga           | 02 6932 9900 |
| Suttons Kenworth DAF Arncliffe            | 02 9335 9080 |
| BHTC Kenworth DAF Broken Hill             | 08 8088 7777 |

## SOUTH AUSTRALIA

|                                |              |
|--------------------------------|--------------|
| TRP Burton                     | 08 8280 4800 |
| TRP Port Lincoln               | 08 8682 1000 |
| BMG Kenworth DAF Mt Gambier    | 08 8721 3400 |
| Kenworth DAF Adelaide          | 08 8139 4000 |
| Kenworth DAF Riverland - Berri | 08 8582 2944 |
| Kenworth DAF Bordertown        | 08 8752 0077 |

## TASMANIA

|                             |              |
|-----------------------------|--------------|
| CJD Kenworth DAF Burnie     | 03 6431 7833 |
| CJD Kenworth DAF Hobart     | 03 6262 6200 |
| CJD Kenworth DAF Launceston | 03 6345 4100 |

## NORTHERN TERRITORY

|                                |              |
|--------------------------------|--------------|
| CJD Kenworth DAF Alice Springs | 08 8959 0500 |
| CJD Kenworth DAF Darwin        | 08 8935 9100 |

## NEW ZEALAND

|                                       |                      |
|---------------------------------------|----------------------|
| TRP New Plymouth                      | 0011 64 (6) 262 0009 |
| TRP Gisborne                          | 0011 64 (6) 261 5660 |
| TRP Palmerston North                  | 0011 64 (6) 222 3400 |
| TRP Timaru                            | 0011 64 (3) 264 6000 |
| Southpac Trucks Kenworth Auckland     | 0011 64 (9) 262 3181 |
| Southpac Trucks Kenworth Christchurch | 0011 64 (3) 344 0252 |
| Southpac Trucks Kenworth Hamilton     | 0011 64 (7) 222 2041 |
| Southpac Trucks Kenworth Rotorua      | 0011 64 (7) 345 9761 |



TRUCK & TRAILER PARTS®

TRUSTED. RELIABLE. PROVEN.

LONG LIVE YOUR TRUCK & TRAILER / APR — MAY 2025



BRISBANE TRUCK SHOW EDITION



Brisbane Truck Show 2019

### SQUAT JACK - HEAVY DUTY

**\$149**



**Squat Jack 20 Tonne**  
Height Lowered 195mm  
Height Raised 365mm  
Lifting Height 106mm  
Adjusting Height 65mm  
Net Weight 8.75kg  
Working Load Limit 20000kg

- Hydraulic
- 20 tonne
- 5 piece handle included
- Complies to AS/NZS 2693:2007 Reconfirmed 2017

Z68-TP-1000

### BOTTLE JACK - HEAVY DUTY

**\$179**



**Bottle Jack 20 Tonne**

Height Lowered 278mm  
Height Raised 515mm  
Lifting Height 180mm  
Adjusting Height 65mm  
Net Weight 11.0kg  
Working Load Limit 20000kg

- Hydraulic
- 20 tonne
- 5 piece handle included
- Complies to AS/NZS 2693:2007 Reconfirmed 2017

Z68-TP-1001



TRUCK & TRAILER PARTS

TO ENQUIRE ABOUT A PART, FREECALL\*  
**1800 TRPART (877 278)**

## RUBBER CHOCK

P MEMBERS FROM  
**\$39.95**

NON-MEMBERS FROM  
**\$44.95**



T13-WC1086



T13-WC2556A



I Heavy duty

T13-WC1086 P **\$39.95** ~~\$44.95~~ Pyramid

T13-WC2556A P **\$48.95** ~~\$53.95~~ Wedge

## RUBBER TIE DOWN

FROM  
**\$10.95**

Y84-TP-1000



Y84-TP-1002

I Round style

I Dog bone style

Y84-TP-1000 **\$10.95** 2 pack Y84-TP-1002 **\$12.95** 2 pack

Y84-TP-1001 **\$49.95** 10 pack Y84-TP-1003 **\$58.95** 10 pack

## AIR COIL

P MEMBERS FROM  
**\$56.95**

NON-MEMBERS FROM  
**\$61.95**



TRP-A1R-3MLT



TRP-A1R-3MST

I Pair

I 3m

TRP-A1R-3MST P **\$56.95** ~~\$61.95~~ Short tail

TRP-A1R-3MLT P **\$61.95** ~~\$66.95~~ Long tail

## ELECTRICAL CONNECTORS

**\$10.70**

TRP-TP-7P1N



I 12V

TRP-TP-7P1N

7 pin standard round metal trailer plug

TRP-TS-6MC

7 pin standard round metal trailer socket

TRP-TS-6MC

## DISC BRAKE PADS

P MEMBERS FROM  
**\$110**

NON-MEMBERS FROM  
**\$135**



1536932



I ECE R90 approved

1536932 P **\$110** ~~\$135~~  
Suits Meritor DX225

1961736 P **\$119** ~~\$144~~  
Suits Knorr SK7

SEE IN STORE FOR COMPLETE RANGE

## DISC BRAKE ROTORS

P MEMBERS FROM  
**\$165**

NON-MEMBERS FROM  
**\$195**

P MEMBERS SAVE \$30

TRPDR001



I ECE R90 approved

TRPDR001 P **\$165** ~~\$195~~

Suits BPW 430mm 10 stud, 285PCD

TRPDR008 P **\$184** ~~\$214~~

Suits Meritor 420mm 10 stud, 285 PCD

SEE IN STORE FOR COMPLETE RANGE

## SHOCK ABSORBER

P MEMBERS FROM  
**\$109**



P MEMBERS  
SAVE  
\$15

NON-MEMBERS FROM  
**\$124**



SA012TRP

SA012TRP P ~~\$109~~ **\$124**  
Suits Hendrickson HAS400 & HAS460, Airlight 2/HD series

SA001TRP P ~~\$124~~ **\$139**  
Suits Kenworth front, parabolic spring

SA018TRP P ~~\$124~~ **\$139**  
Suits Kenworth Airglide 9" ride height

SA003TRP P ~~\$134~~ **\$149**  
Suits Kenworth Airglide 200/400 10.5" ride height

SA004TRP P ~~\$134~~ **\$149**  
Suits Neway suspensions - AD246-10"

SA002TRP P ~~\$144~~ **\$159**  
Suits Kenworth front, multi-leaf spring

## TRAILER AXLE BEARING KIT

TRP5822

**\$149**



TRP5822

- Trailer GP axle (includes seal & hubcap)
- European designed and engineered to the highest standards, using only OEM quality materials
- Bearings have a high load carrying and running accuracy and are inspected to the zero defect level
- Seals come pre-lubricated

TRP5822 **\$149**

TRP5809 **\$121**

## STEEL JACKET DRUM

P MEMBERS  
**\$174**

NON-MEMBERS  
**\$199**



P MEMBERS  
SAVE  
\$25

- 285 PCD
- 10 stud
- Lightweight composite steel drum
- One piece formed shell
- No welded-on balance weights OE seams
- Independantly tested to FMVSS 121 standards

DB017TRP  
16.5" x 7"

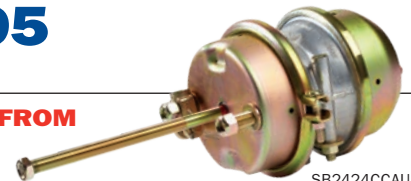
DB020TRP  
16.5" x 5"

DB020TRP

## BRAKE CHAMBER

P MEMBERS FROM  
**\$54.95**

NON-MEMBERS FROM  
**\$59.95**



SB2424CCAUS

SB2424CCAUS P ~~\$54.95~~ **\$59.95**  
24/24 brake chamber

SB2430CCAUS-1 P ~~\$54.95~~ **\$59.95**  
24/30 brake chamber

SB3030CCAUS P ~~\$54.95~~ **\$59.95**  
30/30 brake chamber

SB2430CCAUS-320-1 P ~~\$56.95~~ **\$61.95**  
24/30 extended push rod 120mm

SB3030CCAUS-320 **\$65.95**  
30/30 extended shaft

SEE IN STORE FOR COMPLETE RANGE

TO SEE THE  
TRP BRAKE  
CHAMBER  
VIDEO,  
SCAN THE  
QR CODE





TRUCK & TRAILER PARTS

TO ENQUIRE ABOUT A PART, FREECALL\*  
**1800 TRPART (877 278)**

## RECEIVER DRYER

GD11350

**\$50-70**

GD11350



- Manufactured using OE materials and dimensions
- No installation modifications required for fitment
- Spring-loaded design ensures desiccant is kept under constant pressure, preventing desiccant from escaping and contaminating the compressor
- 12 month warranty

GD11350 **\$50.70**

Suits K200, current C5, T9 and T659 models & older Cab Over & conventional Kenworth models

JA23200 **\$49**

Suits T360, T360A, T410SAR, T610, T610SAR, T320, T320A, T420, T420SAR, K220

## COMPACT PARKING COOLER

**P MEMBERS**  
**\$3,490**



**NON-MEMBERS**  
**\$4,290**



- Stand-alone air conditioning

1541252

Suits DAF XF, CF and LF models

## ALLCOOL® PREMIXED COOLANT

**FROM**  
**\$22.50**

ALLCOOL-1000M

- Premium universal ethylene glycol coolant
- Australian made
- Premixed - ready to use

|               |                          |        |
|---------------|--------------------------|--------|
| ALLCOOL-5M    | <b>\$22.50</b>           | 5L     |
| ALLCOOL-20M   | <b>\$89.95</b>           | 20L    |
| ALLCOOL-205M  | <b>P \$800 \$850</b>     | 205L   |
| ALLCOOL-1000M | <b>P \$3,600 \$3,800</b> | 1,000L |



ALLCOOL-5M

ALLCOOL-20M

ALLCOOL-205M

## CABIN FILTER

F37-TP-1002

**\$29.95**

F37-TP-1002



F37-TP-1000 **\$24.95**  
Suits K200

F37-TP-1001 **\$21.50**  
Suits Kenworth T360, T410, T610

F37-TP-1002 **\$29.95**  
Suits K220

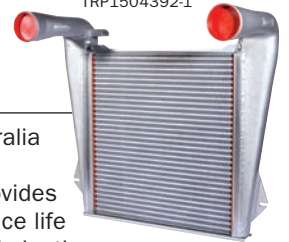
F37-TP-1003 **\$13**  
Recirculation filter, suits K220

## CHARGE AIR COOLER

TRP1504392-1

**\$2,495**

TRP1504392-1



- Designed and manufactured in Australia for Australian conditions
- Unique silicone grommet system provides leak free operation & extended service life
- Greater vibration & load handling, eliminating premature failures

TRP1504392-1 **\$2,495**  
Suits T350/T359/T401/T601

TRP8907522-1 **\$2,195**  
Suits T409 Legend

TRP1604892-1 **\$2,695**  
Suits K100/K104

TRP1704836-1 **\$2,345**  
Suits K108/K104

TRP1615726-1 **\$2,595**  
Suits K108

TRP2306049-1 **\$2,695**  
Suits K404/T604/T650

TRP7291000-1 **\$3,295**  
Suits K200

TRP1706053-1 **\$2,895**  
Suits T650/T904/T408/  
T608/T658/T908/C508/  
T609/T409SAR/T609/T409/  
T659/T909/C509/T403

TRP1405115-1 **\$2,695**  
T904 / T950/C500/T409/  
T409SAR/ T659/T909/C509

TO SEE THE TRP  
CHARGE AIR  
COOLER VIDEO,  
SCAN THE  
QR CODE



## SILICONE COOLANT HOSE

FROM  
**\$35**



V31-TP-1010

- 4 ply polyester reinforced
- Made for Australian conditions

| PART NO.    | DESCRIPTION | LENGTH (MM) | PRICE          |
|-------------|-------------|-------------|----------------|
| V31-TP-1000 | 1"ID        | 1000        | <b>\$79.95</b> |
| V31-TP-1001 | 1.25"ID     | 1000        | <b>\$79.95</b> |
| V31-TP-1002 | 1.5"ID      | 1000        | <b>\$79.95</b> |
| V31-TP-1003 | 1.75"ID     | 1000        | <b>\$84.95</b> |
| V31-TP-1004 | 2"ID        | 1000        | <b>\$89.95</b> |
| V31-TP-1005 | 2.25" ID    | 1000        | <b>\$89.95</b> |
| V31-TP-1007 | 2.5"ID      | 1000        | <b>\$94.95</b> |
| V31-TP-1008 | 2.75"ID     | 1000        | <b>\$94.95</b> |
| V31-TP-1009 | 3"ID        | 1000        | <b>\$94.95</b> |
| V31-TP-1010 | 2"ID        | 300         | <b>\$35</b>    |
| V31-TP-1011 | 2.5"ID      | 300         | <b>\$35</b>    |
| V31-TP-1012 | 3"ID        | 300         | <b>\$35</b>    |

## BRAKE CLEAN

P MEMBERS  
**\$137**

NON-MEMBERS  
**\$147**



- Quick drying solvent-based degreaser for brake parts and general parts around the workshop

TRPBC20 20 Litre

## SUPER WASH

P MEMBERS  
**\$74.95**

NON-MEMBERS  
**\$79.95**



- Traditional blue concentrated truck wash
- Comfortably penetrates road grime, foams up well and rinses to a non-streak finish

TRPSW20 20 Litre

## ENGINE CLEAN TYRE SHEEN

P MEMBERS  
**\$67.95**

NON-MEMBERS  
**\$72.95**



- Heavy duty water based degreaser
- 'Quick break' product
- Biodegradable and triple interceptor safe

TRPEC20 20 Litre

P MEMBERS  
**SAVE \$5**

P MEMBERS  
**\$138**

NON-MEMBERS  
**\$158**



- Gives a superior long lasting gloss

TRPTS20 20 Litre

P MEMBERS  
**SAVE \$20**

## PREMIUM WASH & WAX

P MEMBERS  
**\$77.95**

NON-MEMBERS  
**\$82.95**



- Glides over paintwork
- Cleans brilliantly and produces a superior gloss with carnauba wax

TRPPW20 20 Litre

TO SEE THE TRP TRUCK WASH VIDEO, SCAN THE QR CODE





TRUCK & TRAILER PARTS

TO ENQUIRE ABOUT A PART, FREECALL\*  
**1800 TRPART (877 278)**

## NEW TRP® STORE OPENS IN PARKES MAY 1!



TRP Parkes, External



TRP Parkes, Internal

The town of Parkes, situated in the Central West Region of New South Wales, is now home to a brand-new truck and trailer parts store under the globally successful TRP® brand.

The new store, opening May 1, is operated by Inland Truck Centres, part of RDO Equipment. It joins the ever-expanding list of TRP stores throughout Australia and New Zealand, now standing at 23, and 360 outlets world-wide.

TRP, a PACCAR brand, is positioned as an affordable all makes supplier of high-quality parts for prime mover, rigid trucks, and all types of heavy trailers, stocks well-known brand consumables for all major truck brands. The range includes filtration, lubricant, and electrical products, to brakes, suspensions, steering, wheel ends, trailer parts and accessories. All TRP Parts come with a minimum 12-month warranty.

Phil Canning, Chief Executive Officer of RDO Equipment, said “Inland Truck Centres are pleased to announce the opening of our first TRP store in Parkes, NSW, to service the growing demand for support of the road transport industry in the Central West. This new store will serve operators within the Parkes Special Activation Precinct and Inland Rail National Logistics Hub intermodal facilities, located at the junction of Australia’s two rail spines, with PACCAR’s complete offering of quality truck and trailer parts”.

Mark Santschi, General Manager of PACCAR Parts Australia, said “We congratulate Inland Truck Centres on their new store, which helps achieve PACCAR Parts’ mission to increase customer uptime by making our parts available and accessible to all customers, Australia-wide”.

**The TRP Parkes store is located at Unit 2 / 15 Saleyards Rd, Parkes.  
From May, it will be open from 8am-5pm Monday to Friday and 8am-12pm on Saturdays.**

**FREECALL\* 1800 TRPART (877 278)**  
**ONE PHONE NUMBER TO CONNECT WITH DEALERS AUSTRALIA WIDE**

Prices herein are recommended selling prices for both Privileges members and non-members, inclusive of GST. Recommended selling prices in this publication are provided as a guide. Prices may vary at the dealerships. Freight charges may apply. Core charges are not included in selling price however may be applied by the dealer. All items have been included in good faith on the basis that goods will be available at the time of sale. Promotion available at participating Dealers from 1 April to 31 May 2025 or while stocks last.

For more details contact: Freecall\* 1800 877 278 · Email: [info@trpparts.com.au](mailto:info@trpparts.com.au) · [www.trpparts.com.au](http://www.trpparts.com.au)

\* Calls from Australian landlines are generally free of charge whilst calls from mobile phones are typically charged based on the rate determined by the caller’s mobile service provider. Please check with your mobile service provider for call rates.